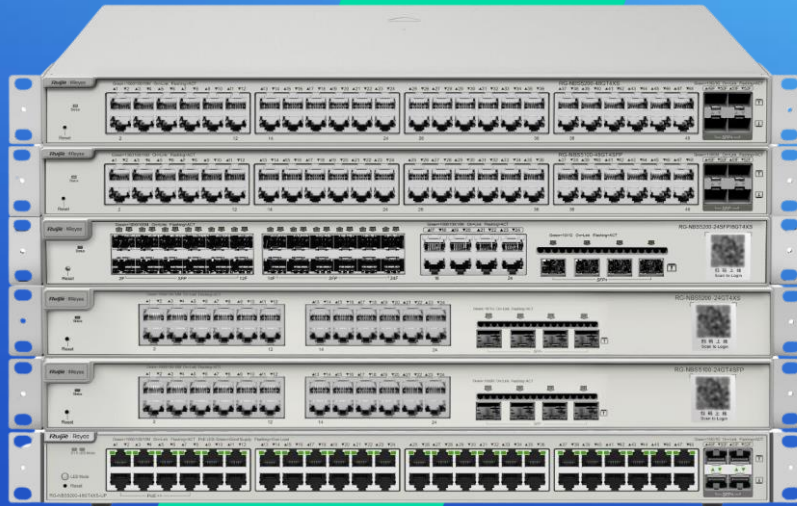


# RG-NBS51/52 series Layer 3 Cloud Managed Switches

DATASHEET

[Explore More](#)



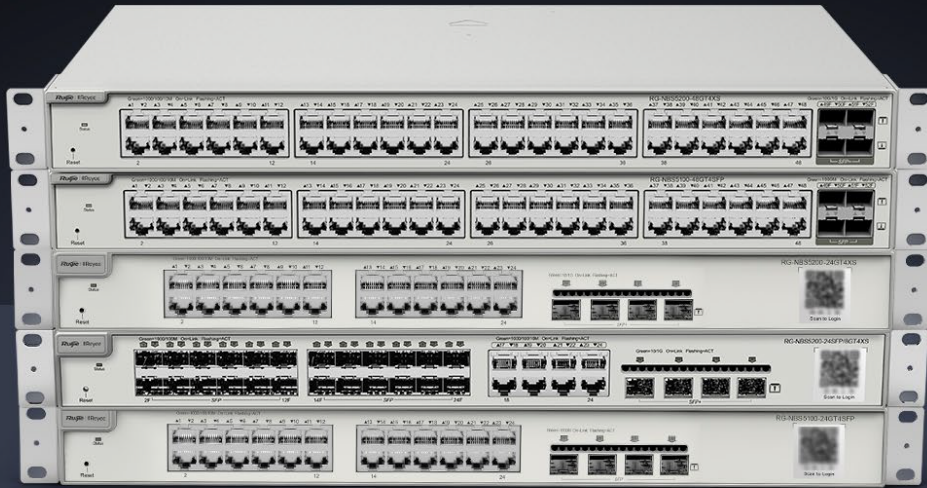
## Highlights

- Enterprise-class quality ensures High Performance
- Dynamic routing allows traffic to be routed at Layer 3
- Multiple security policies protect your network
- Lifetime management on Ruijie Cloud at anytime anywhere

# Highlight Features

## RG-NBS5000 Series Switch

High performance Layer 3 switch for core/aggregation



Dynamic Routing



6kV Surge Protection



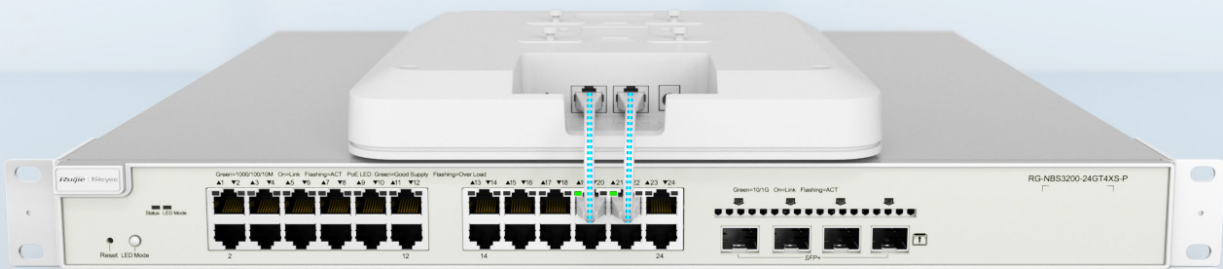
5 Years Warranty

## Enterprise-class Quality Ensures High Performance

[Link Aggregation](#)

[IGMP Snooping](#)

[VLAN](#)



# Highlight Features

## Enterprise-class Quality Ensures High Performance

Link Aggregation

**IGMP Snooping**

VLAN

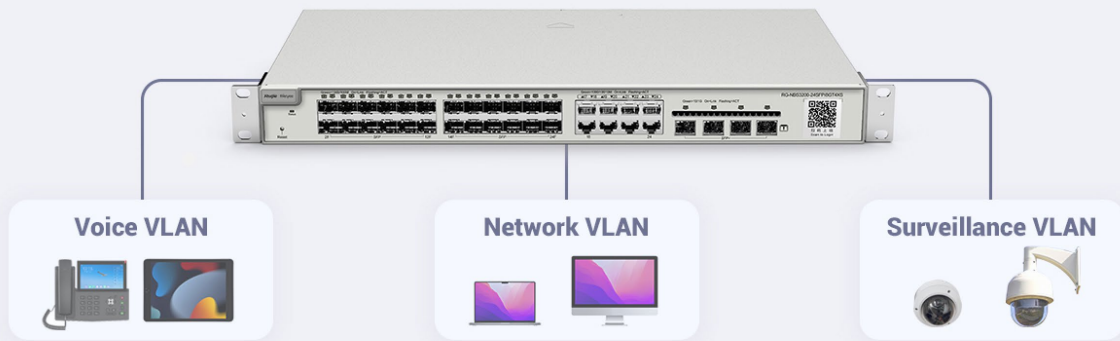


## Enterprise-class Quality Ensures High Performance

Link Aggregation

IGMP Snooping

**VLAN**



# Highlight Features

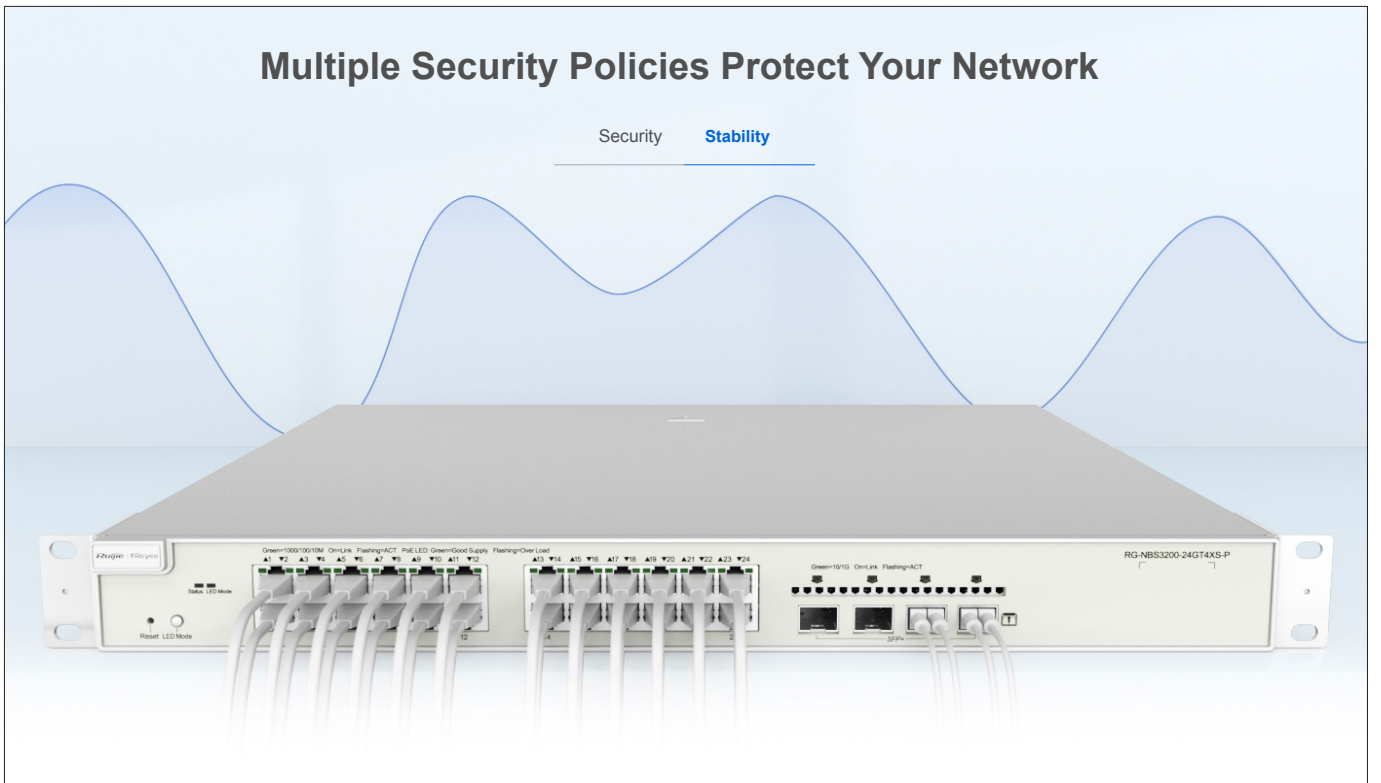
## Multiple Security Policies Protect Your Network

Security Stability



## Multiple Security Policies Protect Your Network

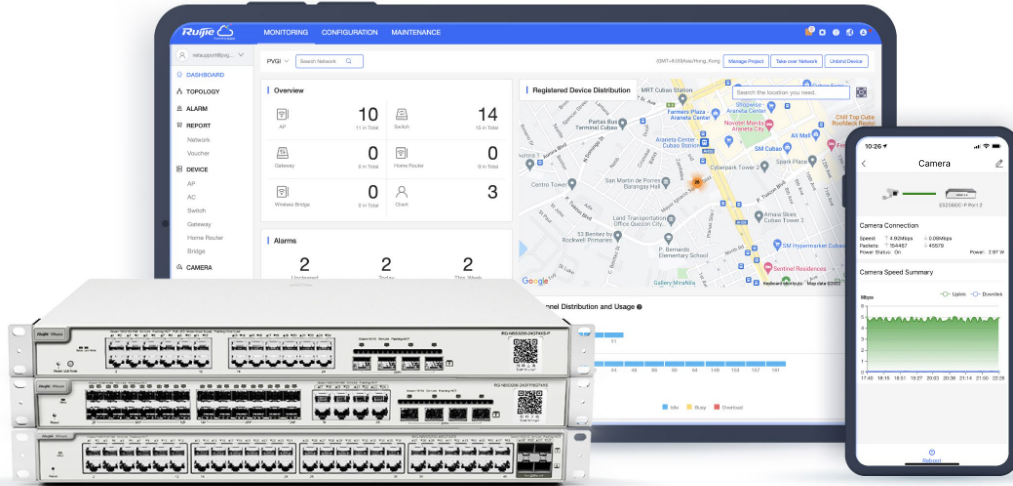
Security Stability



# Highlight Features

## Cloud, Make Your Business Easy

- SON, zero touch provisioning to Cloud
- Monitor switch statistics at anytime anywhere
- Configure VLANs on Ruijie Cloud APP
- Easy maintenance, save onsite time and cost





# Specifications

Specifications		RG-NBS5100-24GT4SFP	RG-NBS5100-48GT4SFP	RG-NBS5100-24GT4SFP-P
<b>Hardware Specifications</b>				
<b>Port</b>	Total Number of RJ45 Ports	24	48	24
	Total Number of Optical Ports	4	4	4
	Number of 1GE SFP ports	4	4	4
	Number of 1GE RJ45 ports	24	48	24
<b>POE</b>	Number of PoE/PoE+ out ports	N/A	N/A	24
	PoE budget	N/A	N/A	370W
	PoE power pins	N/A	N/A	1 2+ 3 6-
<b>System Specifications</b>	CPU	MAC chip with a built-in single-core CPU, 800MHz	MAC chip with a built-in dual-core CPU, 1GHz	MAC chip with a built-in single-core CPU, 800MHz
	RAM	512MB	1GB	512MB
	Flash memory	256MB	256MB	256MB
	Recommended camera limit	200W H265:350 400W H265:170	200W H265:400 400W H265:200	200W H265:350 400W H265:170
	Forwarding rate	42Mpps	78Mpps	42Mpps
	Switching capacity	56Gbps	104Gbps	56Gbps
	Maximum number of VLANs	4094	4094	4094
	Maximum number of MAC address entries	16000	16000	16000
	Maximum number of ARP entries	2000	2000	2000
	Routing table capacity (main unit routing)	6000	12000	6000
	Maximum number of IPv4 static routes	500	500	500
	Routing table capacity (network routing)	128	500	128
	Maximum number of IPv6 static routes	128	500	128

Specifications		RG-NBS5100-24GT4SFP	RG-NBS5100-48GT4SFP	RG-NBS5100-24GT4SFP-P
	Maximum number of ACEs	In-1900 Out-0	In-1900 Out-0	In-1900 Out-0
<b>Power</b>	Power input	Rated voltage range: 100-240VAC Maximum voltage range: 90-264VAC Frequency: 50/60Hz Rated current: 1.5A	Rated voltage range: 100-240VAC Maximum voltage range: 90-264VAC Frequency: 50/60Hz Rated current: 2A	Rated voltage range: 100-240V~ Maximum voltage range: 90-264V~ Frequency: 50/60Hz Rated current: 6A
	Maximum power consumption	28.028W	46.4W	No PoE load: 42.48W; Full PoE load: 431.86W
	Power output	12V(3.33A),P=40W	12V/5.83A,P=70W	54V/6.9A,12V/3A,P=409W
	Input power supply	Single fixed power supply	Single fixed power supply	Single fixed power supply
<b>FAN</b>	Fan	1	2	2
	Fan speed adjustment	Hardware-based adjustment	Hardware-based adjustment	Hardware-based adjustment
	Heat dissipation	95.85576 BTU/hr(220V/50Hz)	158.688 BTU/hr(220V/50Hz)	No PoE load: ≤145.2816 BTU/hr(220V/50Hz); Full PoE load: ≤1,476.9612 BTU/hr(220V/50Hz)
	Acoustic noise	<45dB (when the device works normally)	<45dB (when the device works normally)	<49dB (when the device works normally)
<b>EMC</b>	EMC	EN 55032:2015+AC:2016 EN 61000-3-2:2014 EN 61000-3-3:2013 EN 55035:2017 ETSI EN 300 386 V2.1.1 (2016-07)	EN 55032:2015+AC:2016 EN 61000-3-2:2014 EN 61000-3-3:2013 EN 55035:2017 ETSI EN 300 386 V2.1.1 (2016-07)	EN 55032:2015+AC:2016 EN 61000-3-2:2014 EN 61000-3-3:2013 EN 55035:2017 ETSI EN 300 386 V2.1.1 (2016-07)
<b>Safety Compliance</b>	Safety compliance	IEC 62368-1	IEC 62368-1	IEC 62368-1
<b>Certification</b>	CE, FCC	CE;FCC	CE;FCC	CE;FCC
<b>Mounting</b>	Mounting	Rack installation	Rack installation	Rack installation
<b>Casing</b>	Casing	Metal	Metal	Metal
<b>Cable Hot-Swappable</b>	Hot swapping of cables	Supported by all ports	Supported by all ports	Supported by all ports
<b>Mean Time Between Failure (MTBF)</b>	MTBF	400000H	400000H	400000H
<b>Warranty</b>	Warranty Card	5	5	5
<b>EEE</b>	EEE	Yes	Yes	Yes

Specifications		RG-NBS5100-24GT4SFP	RG-NBS5100-48GT4SFP	RG-NBS5100-24GT4SFP-P
<b>Environment and Reliability</b>	Operating temperature	0 to 50°C	0 to 50°C	0 to 50°C
	Storage temperature	-40 to 70°C	-40 to 70°C	-40 to 70°C
	Operating humidity	10% to 90% RH(non-condensing)	10% to 90% RH(non-condensing)	10% to 90% RH(non-condensing)
	Storage humidity	5% to 95% RH(non-condensing)	5% to 95% RH(non-condensing)	5% to 95% RH(non-condensing)
	Operating altitude	-500~5000M	-500~5000M	-500~5000M
	ESD protection	Air Discharge: 8kV Contact Discharge: 6kV	Air Discharge: 8kV Contact Discharge: 6kV	Air Discharge: 8kV Contact Discharge: 6kV
	Surge protection	Common Mode 6kV	Common Mode 6kV	Common Mode 6kV
	Surge protection	Common Mode 6kV Differential mode 6kV	Common Mode 6kV Differential mode 6kV	Common Mode 6kV Differential mode 6kV
<b>Package Contents</b>	Dimensions (W x D x H)	440mm x 207.5mm x 43.6mm	440mm x 267.5mm x 43.6mm	440mm x 357.6mm x 43.6mm
	Weight	2.9 kg	3.6 kg	4.75 kg
	Shipping weight	4.02kg	5.14kg	6.51kg
	Rack-mount bracket	2	2	2
	Screw	M4 Screw*8	M4 Screw*8	M4 Screw*8
	User Manual	1	1	1
	Rubber pad	4	4	4
	Input power supply	Single fixed power supply	Single fixed power supply	Single fixed power supply
	Warranty Card	1	1	1
<b>L2</b>				
<b>Jumbo Frame</b>	Jumbo frame length (MTU)	9216 Bytes(Per-port MTU)	9216 Bytes(Per-port MTU)	9216 Bytes(Per-port MTU)
<b>port</b>	Port flow control	Yes	Yes	Yes
	PoE watchdog	N/A	N/A	Yes
	Port isolation	Yes	Yes	Yes
	EEE	Yes	Yes	Yes
	Cable Test	Yes	Yes	Yes
<b>VLAN</b>	IEEE802.1Q VLAN	Yes	Yes	Yes
	Port-based VLAN	Yes	Yes	Yes
	Voice VLAN	Yes	Yes	Yes



Specifications		RG-NBS5100-24GT4SFP	RG-NBS5100-48GT4SFP	RG-NBS5100-24GT4SFP-P
STP	STP (IEEE 802.1d)	Yes	Yes	Yes
	RSTP (IEEE 802.1w)	Yes	Yes	Yes
	MSTP (IEEE 802.1s)	Yes	Yes	Yes
G.8032 (ERPS)	ERPS	Yes	Yes	Yes
LLDP	LLDP	Yes	Yes	Yes
	LLDP-MED	Yes	Yes	Yes
SPAN	Port mirroring	Yes	Yes	Yes
	Mirroring	Yes	Yes	Yes
IGMP	IGMPv1 snooping	Yes	Yes	Yes
	IGMPv2 snooping	Yes	Yes	Yes
	Basic IGMPv3 snooping	Yes	Yes	Yes
	Full IGMPv3 snooping	Yes	Yes	Yes
	IGMP filtering	Yes	Yes	Yes
Mac Address	Static MAC address	Yes	Yes	Yes
	MAC address filtering	Yes	Yes	Yes
Link Aggregation	Static aggregation	Yes	Yes	Yes
	Load balancing	Yes	Yes	Yes
	LACP	Yes	Yes	Yes
Storm Suppression	Broadcast storm control	Yes	Yes	Yes
	Multicast storm control	Yes	Yes	Yes
	Unknown unicast storm control	Yes	Yes	Yes
<b>L3</b>				
ARP	ARP	Yes	Yes	Yes
IPv4	IPv4 ping	Yes	Yes	Yes
	IPv4 static route	Yes	Yes	Yes
	IPv4 traceroute	Yes	Yes	Yes
IPv6 Configuration	IPv6 static route	Yes	Yes	Yes
	ICMPv6	Yes	Yes	Yes
	IPv6 ping	Yes	Yes	Yes
	IPv6 traceroute	Yes	Yes	Yes
OSPF	OSPFv2	Yes	Yes	Yes

Specifications		RG-NBS5100-24GT4SFP	RG-NBS5100-48GT4SFP	RG-NBS5100-24GT4SFP-P
	OSPFv3	Yes	Yes	Yes
<b>IGMP</b>	IGMP V1, V2, V3	Yes	Yes	Yes
<b>DNS</b>	DNS client	Yes	Yes	Yes
	DNSv6 client	Yes	Yes	Yes
<b>DHCP</b>	DHCP relay	Yes	Yes	Yes
	DHCP snooping	Yes	Yes	Yes
	DHCP server	Yes	Yes	Yes
	DHCP client	Yes	Yes	Yes
<b>HTTP v6</b>	HTTP Access by IPv6	Yes	Yes	Yes
<b>High Features</b>				
<b>ACL</b>	Standard ACL	Yes	Yes	Yes
	Extended MAC ACL	Yes	Yes	Yes
	Extended IP ACL	Yes	Yes	Yes
	IPv6 ACL	Yes	Yes	Yes
<b>QoS</b>	802.1p traffic classification	Yes	Yes	Yes
	DSCP-based traffic classification	Yes	Yes	Yes
	Egress queues based on 802.1p and DSCP	Yes	Yes	Yes
	SP	Yes	Yes	Yes
	WRR	Yes	Yes	Yes
	SP+WRR	Yes	Yes	Yes
	Global QoS	Yes	Yes	Yes
	Interface-based rate limiting (ingress/egress)	Yes	Yes	Yes
<b>Online Upgrade</b>	Online Upgrade	Yes	Yes	Yes
<b>RLOG</b>	RLOG	Yes	Yes	Yes
<b>Self-Organizing Network</b>	SON	Yes	Yes	Yes
<b>syslog</b>	System log	Yes	Yes	Yes
<b>Client Identification</b>	Client discovery	Yes	Yes	Yes
<b>ALARM</b>	Camera detection	Yes	Yes	Yes

Specifications		RG-NBS5100-24GT4SFP	RG-NBS5100-48GT4SFP	RG-NBS5100-24GT4SFP-P
	Loop alarm	Yes	Yes	Yes
	MAC address entries	Yes	Yes	Yes
	IP address pool conflicts	Yes	Yes	Yes
	Full ARP table	Yes	Yes	Yes
	PoE service failure	NO	NO	Yes
	PoE power overload	NO	NO	Yes
<b>Radius</b>	RADIUS	Yes	Yes	Yes
<b>802.1X</b>	802.1X authentication	Yes	Yes	Yes
	Port-based 802.1X authentication	Yes	Yes	Yes
	MAC-based 802.1X authentication	Yes	Yes	Yes
	Guest VLAN	Yes	Yes	Yes
<b>IP+MAC Port Binding</b>	IP-MAC-port binding	Yes	Yes	Yes
<b>Anti-ARP Spoofing</b>	ARP anti-spoofing	Yes	Yes	Yes
<b>IP Source Guard</b>	IP source guard	Yes	Yes	Yes
<b>CPU Protection Policy (CPP)</b>	CPU Protection Policy	Yes	Yes	Yes
<b>Management Features</b>				
<b>Web Management</b>	eWeb	Yes	Yes	Yes
<b>MACC</b>	Ruijie Cloud	Yes	Yes	Yes
<b>APP</b>	Ruijie Reeye App	Yes	Yes	Yes
<b>SNMP</b>	SNMPv1, v2c, and v3	Yes	Yes	Yes

# Specifications

Specifications		RG-NBS5200-24GT4XS	RG-NBS5200-48GT4XS	RG-NBS5200-24SFP/8GT4XS	RG-NBS5200-48GT4XS-UP	RG-NBS5200-24GT4XS-P
<b>Hardware Specifications</b>						
<b>Port</b>	Total Number of RJ45 Ports	24	48	8	48	24
	Total Number of Optical Ports	4	4	28	4	4
	Number of Combo Ports	N/A	N/A	8	N/A	N/A
	Number of 1GE SFP ports	N/A	N/A	24	N/A	N/A
	Number of 10GE SFP+ ports	4	4	4	4	4
	Number of 1GE RJ45 ports	24	48	8	48	24
<b>POE</b>	Number of PoE/PoE+ out ports	N/A	N/A	N/A	48	24
	Number of PoE/PoE+/PoE++ out ports	N/A	N/A	N/A	8	N/A
	PoE budget	N/A	N/A	N/A	740W	370W
	PoE power pins	N/A	N/A	N/A	1-8port (1 2- 3 6+ 4 5+ 7 8-) 9-48 port (1 2+ 3 6- )	1 2+ 3 6-
<b>System Specifications</b>	CPU	MAC chip with a built-in single-core CPU, 800MHz	MAC chip with a built-in dual-core CPU, 1GHz	MAC chip with a built-in single-core CPU, 800MHz	MAC chip with a built-in dual-core CPU, 1GHz	MAC chip with a built-in single-core CPU, 800MHz
	RAM	512MB	1GB	512MB	512MB	512MB
	Flash memory	256MB	256MB	256MB	256MB	256MB
	Recommended camera limit	200W H265:350 400W H265:170	200W H265:400 400W H265:200	200W H265:350 400W H265:170	200W H265:400 400W H265:200	200W H265:350 400W H265:170
	Forwarding rate	96Mpps	132Mpps	96Mpps	132Mpps	96Mpps

Specifications		RG-NBS5200-24GT4XS	RG-NBS5200-48GT4XS	RG-NBS5200-24SFP/8GT4XS	RG-NBS5200-48GT4XS-UP	RG-NBS5200-24GT4XS-P
	Switching capacity	128Gbps	216Gbps	128Gbps	176Gbps	128Gbps
	Maximum number of VLANs	4094	4094	4094	4094	4094
	Maximum number of MAC address entries	16000	16000	16000	16000	16000
	Maximum number of ARP entries	2000	2000	2000	2000	2000
	Routing table capacity (main unit routing)	6000	12000	6000	12000	6000
	Maximum number of IPv4 static routes	500	500	500	500	500
	Routing table capacity (network routing)	128	500	128	500	128
	Maximum number of IPv6 static routes	128	500	128	500	128
	Maximum number of ACEs	In-1900 Out-0	In-1900 Out-0	In-1900 Out-0	In-1900 Out-0	In-1900 Out-0
	Number of VCS members	2	2	2	2	2
<b>Power</b>	Power input	Rated voltage range: 100-240VAC Maximum voltage range: 90-264VAC Frequency: 50/60Hz Rated current: 1.5A	Rated voltage range: 100-240VAC Maximum voltage range: 90-264VAC Frequency: 50/60Hz Rated current: 2A	Rated voltage range: 100-240VAC Maximum voltage range: 90-264VAC Frequency: 50/60Hz Rated current: 2A	Rated voltage range: 100-240V~ Maximum voltage range: 90-264V~ Frequency: 50/60Hz Rated current: 10A	Rated voltage range: 100-240V~ Maximum voltage range: 90-264V~ Frequency: 50/60Hz Rated current: 6A

Specifications		RG-NBS5200-24GT4XS	RG-NBS5200-48GT4XS	RG-NBS5200-24SFP/8GT4XS	RG-NBS5200-48GT4XS-UP	RG-NBS5200-24GT4XS-P
	Maximum power consumption	28.028W	46.4W	41.8W	No PoE load: 75.6W; Full PoE load: 815.6W	No PoE load: 42.48W; Full PoE load: 431.86W
	Power output	12V/3.33A,P=40W	12V/5.83A,P=70W	12V(5.84A),P=70W	Vout=54V(13.7A), Vsb=12V(8A),P=840W	54V/6.9A,12V/3A,P=409W
	Input power supply	Single fixed power supply	Single fixed power supply	Single fixed power supply	Single fixed power supply	Single fixed power supply
<b>FAN</b>	Fan	1	2	2	3	2
	Fan speed adjustment	Hardware-based adjustment	Hardware-based adjustment	Hardware-based adjustment	Hardware-based adjustment	Hardware-based adjustment
	Heat dissipation	158.688 BTU/hr(220V/50Hz)	95.85576 BTU/hr(220V/50Hz)	142.956 BTU/hr(220V/50Hz)	No PoE load: ≤ 258.552 BTU/hr(220V/50Hz); Full PoE load: ≤ 2,789.352 BTU/hr(220V/50Hz)	No PoE load: ≤ 145.2816 BTU/hr(220V/50Hz); Full PoE load: ≤ 1,476.9612 BTU/hr(220V/50Hz)
	Acoustic noise	<45dB (when the device works normally)	<45dB (when the device works normally)	<45dB (when the device works normally)	<60dB (when the device works normally)	<49dB (when the device works normally)
<b>EMC</b>	EMC	EN 55032:2015+AC:2016	EN 55032:2015+AC:2016	EN 55032:2015+AC:2016	EN 55032:2015+AC:2016	EN 55032:2015+AC:2016
		EN 61000-3-2:2014	EN 61000-3-2:2014	EN 61000-3-2:2014	EN 61000-3-2:2014	EN 61000-3-2:2014
		EN 61000-3-3:2013	EN 61000-3-3:2013	EN 61000-3-3:2013	EN 61000-3-3:2013	EN 61000-3-3:2013
		EN 55035:2017	EN 55035:2017	EN 55035:2017	EN 55035:2017	EN 55035:2017
		ETSI EN 300 386 V2.1.1 (2016-07)	ETSI EN 300 386 V2.1.1 (2016-07)	ETSI EN 300 386 V2.1.1 (2016-07)	ETSI EN 300 386 V2.1.1 (2016-07)	ETSI EN 300 386 V2.1.1 (2016-07)
<b>Safety Compliance</b>	Safety compliance	IEC 62368-1	IEC 62368-1	IEC 62368-1	IEC 62368-1	IEC 62368-1
<b>Certification</b>	CE, FCC	CE;FCC	CE;FCC	CE;FCC	CE;FCC	CE;FCC
<b>Mounting</b>	Mounting	Rack installation	Rack installation	Rack installation	Rack installation	Rack installation
<b>Casing</b>	Casing	Metal	Metal	Metal	Metal	Metal
<b>Cable Hot-Swappable</b>	Hot swapping of cables	Supported by all ports	Supported by all ports	Supported by all ports	Supported by all ports	Supported by all ports



Specifications		RG-NBS5200-24GT4XS	RG-NBS5200-48GT4XS	RG-NBS5200-24SFP/8GT4XS	RG-NBS5200-48GT4XS-UP	RG-NBS5200-24GT4XS-P
<b>Mean Time Between Failure (MTBF)</b>	MTBF	400000H	400000H	400000H	400000H	400000H
<b>Warranty</b>	Warranty Card	5	5	5	5	5
<b>EEE</b>	EEE	Yes	Yes	Yes	Yes	Yes
<b>Environment and Reliability</b>	Operating temperature	0 to 50°C	0 to 50°C	0 to 50°C	0 to 50°C	0 to 50°C
	Storage temperature	-40 to 70°C	-40 to 70°C	-40 to 70°C	-40 to 70°C	-40 to 70°C
	Operating humidity	10% to 90% RH(non-condensing)	10% to 90% RH(non-condensing)	10% to 90% RH(non-condensing)	10% to 90% RH(non-condensing)	10% to 90% RH(non-condensing)
	Storage humidity	5% to 95% RH(non-condensing)	5% to 95% RH(non-condensing)	5% to 95% RH(non-condensing)	5% to 95% RH(non-condensing)	5% to 95% RH(non-condensing)
	Operating altitude	-500~5000M	-500~5000M	-500~5000M	-500~5000M	-500~5000M
	ESD protection	Air Discharge: 8kV Contact Discharge: 6kV	Air Discharge: 8kV Contact Discharge: 6kV	Air Discharge: 8kV Contact Discharge: 6kV	Air Discharge: 8kV Contact Discharge: 6kV	Air Discharge: 8kV Contact Discharge: 6kV
	Surge protection	Common Mode 6kV	Common Mode 6kV	Common Mode 6kV	Common Mode 6kV	Common Mode 6kV
Surge protection	Common Mode 6kV Differential mode 6kV	Common Mode 6kV Differential mode 6kV	Common Mode 6kV Differential mode 6kV	Common Mode 6kV Differential mode 6kV	Common Mode 6kV Differential mode 6kV	
<b>Package Contents</b>	Dimensions (W x D x H)	440mm x 207.5mm x 43.6mm	440mm x 267.5mm x 43.6mm	440mm x 267.5mm x 43.6mm	440mm x 357.6mm x 43.6mm	440mm x 357.6mm x 43.6mm
	Weight	2.9 kg	3.6 kg	3.35 kg	5.64 kg	4.75 kg
	Shipping weight	4.02kg	5.14kg	4.9kg	7.15kg	6.51kg
	Rack-mount bracket	2	2	2	2	2
	Screw	M4 Screw*8	M4 Screw*8	M4 Screw*8	M4 Screw*8	M4 Screw*8
	User Manual	1	1	1	1	1
Rubber pad	4	4	4	4	4	

Specifications		RG-NBS5200-24GT4XS	RG-NBS5200-48GT4XS	RG-NBS5200-24SFP/8GT4XS	RG-NBS5200-48GT4XS-UP	RG-NBS5200-24GT4XS-P
	Input power supply	Single fixed power supply	Single fixed power supply	Single fixed power supply	Single fixed power supply	Single fixed power supply
	Warranty Card	1	1	1	1	1
<b>L2</b>						
<b>Jumbo Frame</b>	Jumbo frame length (MTU)	9216 Bytes(Per-port MTU)	9216 Bytes(Per-port MTU)	9216 Bytes(Per-port MTU)	9216 Bytes(Per-port MTU)	9216 Bytes(Per-port MTU)
<b>port</b>	Port flow control	Yes	Yes	Yes	Yes	Yes
	PoE watchdog	N/A	N/A	N/A	Yes	Yes
	Port isolation	Yes	Yes	Yes	Yes	Yes
	EEE	Yes	Yes	Yes	Yes	Yes
	Cable Test	Yes	Yes	Yes	Yes	Yes
<b>VLAN</b>	IEEE802.1Q VLAN	Yes	Yes	Yes	Yes	Yes
	Port-based VLAN	Yes	Yes	Yes	Yes	Yes
	Voice VLAN	Yes	Yes	Yes	Yes	Yes
<b>STP</b>	STP (IEEE 802.1d)	Yes	Yes	Yes	Yes	Yes
	RSTP (IEEE 802.1w)	Yes	Yes	Yes	Yes	Yes
	MSTP (IEEE 802.1s)	Yes	Yes	Yes	Yes	Yes
<b>LLDP</b>	LLDP	Yes	Yes	Yes	Yes	Yes
	LLDP-MED	Yes	Yes	Yes	Yes	Yes
<b>SPAN</b>	Port mirroring	Yes	Yes	Yes	Yes	Yes
	Mirroring	Yes	Yes	Yes	Yes	Yes
<b>IGMP</b>	IGMPv1 snooping	Yes	Yes	Yes	Yes	Yes
	IGMPv2 snooping	Yes	Yes	Yes	Yes	Yes
	Basic IGMPv3 snooping	Yes	Yes	Yes	Yes	Yes
	Full IGMPv3 snooping	Yes	Yes	Yes	Yes	Yes

Specifications		RG-NBS5200-24GT4XS	RG-NBS5200-48GT4XS	RG-NBS5200-24SFP/8GT4XS	RG-NBS5200-48GT4XS-UP	RG-NBS5200-24GT4XS-P
	IGMP filtering	Yes	Yes	Yes	Yes	Yes
Mac Address	Static MAC address	Yes	Yes	Yes	Yes	Yes
	MAC address filtering	Yes	Yes	Yes	Yes	Yes
Link Aggregation	Static aggregation	Yes	Yes	Yes	Yes	Yes
	Load balancing	Yes	Yes	Yes	Yes	Yes
	LACP	Yes	Yes	Yes	Yes	Yes
Storm Suppression	Broadcast storm control	Yes	Yes	Yes	Yes	Yes
	Multicast storm control	Yes	Yes	Yes	Yes	Yes
	Unknown unicast storm control	Yes	Yes	Yes	Yes	Yes
<b>L3</b>						
ARP	ARP	Yes	Yes	Yes	Yes	Yes
IPv4	IPv4 ping	Yes	Yes	Yes	Yes	Yes
	IPv4 static route	Yes	Yes	Yes	Yes	Yes
	IPv4 traceroute	Yes	Yes	Yes	Yes	Yes
IPv6 Configuration	IPv6 static route	Yes	Yes	Yes	Yes	Yes
	ICMPv6	Yes	Yes	Yes	Yes	Yes
	IPv6 ping	Yes	Yes	Yes	Yes	Yes
	IPv6 traceroute	Yes	Yes	Yes	Yes	Yes
OSPF	OSPFv2	Yes	Yes	Yes	Yes	Yes
	OSPFv3	Yes	Yes	Yes	Yes	Yes
IGMP	IGMP V1, V2, V3	Yes	Yes	Yes	Yes	Yes
DNS	DNS client	Yes	Yes	Yes	Yes	Yes
	DNSv6 client	Yes	Yes	Yes	Yes	Yes

Specifications		RG-NBS5200-24GT4XS	RG-NBS5200-48GT4XS	RG-NBS5200-24SFP/8GT4XS	RG-NBS5200-48GT4XS-UP	RG-NBS5200-24GT4XS-P
<b>DHCP</b>	DHCP relay	Yes	Yes	Yes	Yes	Yes
	DHCP snooping	Yes	Yes	Yes	Yes	Yes
	DHCP server	Yes	Yes	Yes	Yes	Yes
	DHCP client	Yes	Yes	Yes	Yes	Yes
<b>HTTP v6</b>	HTTP Access by IPv6	Yes	Yes	Yes	Yes	Yes
<b>High Features</b>						
<b>ACL</b>	Standard ACL	Yes	Yes	Yes	Yes	Yes
	Extended MAC ACL	Yes	Yes	Yes	Yes	Yes
	Extended IP ACL	Yes	Yes	Yes	Yes	Yes
	IPv6 ACL	Yes	Yes	Yes	Yes	Yes
<b>QoS</b>	802.1p traffic classification	Yes	Yes	Yes	Yes	Yes
	DSCP-based traffic classification	Yes	Yes	Yes	Yes	Yes
	Egress queues based on 802.1p and DSCP	Yes	Yes	Yes	Yes	Yes
	SP	Yes	Yes	Yes	Yes	Yes
	WRR	Yes	Yes	Yes	Yes	Yes
	SP+WRR	Yes	Yes	Yes	Yes	Yes
	Global QoS	Yes	Yes	Yes	Yes	Yes
	Interface-based rate limiting (ingress/egress)	Yes	Yes	Yes	Yes	Yes
<b>Online Upgrade</b>	Online Upgrade	Yes	Yes	Yes	Yes	Yes
<b>RLOG</b>	RLOG	Yes	Yes	Yes	Yes	Yes

Specifications		RG-NBS5200-24GT4XS	RG-NBS5200-48GT4XS	RG-NBS5200-24SFP/8GT4XS	RG-NBS5200-48GT4XS-UP	RG-NBS5200-24GT4XS-P
<b>Self-Organizing Network</b>	SON	Yes	Yes	Yes	Yes	Yes
<b>syslog</b>	System log	Yes	Yes	Yes	Yes	Yes
<b>Client Identification</b>	Client discovery	Yes	Yes	Yes	Yes	Yes
<b>ALARM</b>	Camera detection	Yes	Yes	Yes	Yes	Yes
	Loop alarm	Yes	Yes	Yes	Yes	Yes
	MAC address entries	Yes	Yes	Yes	Yes	Yes
	IP address pool conflicts	Yes	Yes	Yes	Yes	Yes
	Full ARP table	Yes	Yes	Yes	Yes	Yes
	PoE service failure	NO	NO	NO	Yes	Yes
	PoE power overload	NO	NO	NO	Yes	Yes
<b>Radius</b>	RADIUS	Yes	Yes	Yes	Yes	Yes
<b>802.1X</b>	802.1X authentication	Yes	Yes	Yes	Yes	Yes
	Port-based 802.1X authentication	Yes	Yes	Yes	Yes	Yes
	MAC-based 802.1X authentication	Yes	Yes	Yes	Yes	Yes
	Guest VLAN	Yes	Yes	Yes	Yes	Yes
<b>IP+MAC Port Binding</b>	IP-MAC-port binding	Yes	Yes	Yes	Yes	Yes
<b>Anti-ARP Spoofing</b>	ARP anti-spoofing	Yes	Yes	Yes	Yes	Yes
<b>IP Source Guard</b>	IP source guard	Yes	Yes	Yes	Yes	Yes
<b>CPU Protection Policy (CPP)</b>	CPU Protection Policy	Yes	Yes	Yes	Yes	Yes
<b>Management Features</b>						

Specifications		RG-NBS5200-24GT4XS	RG-NBS5200-48GT4XS	RG-NBS5200-24SFP/8GT4XS	RG-NBS5200-48GT4XS-UP	RG-NBS5200-24GT4XS-P
<b>Web Management</b>	eWeb	Yes	Yes	Yes	Yes	Yes
<b>MACC</b>	Ruijie Cloud	Yes	Yes	Yes	Yes	Yes
<b>APP</b>	Ruijie Reyee App	Yes	Yes	Yes	Yes	Yes
<b>SNMP</b>	SNMPv1, v2c, and v3	Yes	Yes	Yes	Yes	Yes



**Ruijie | RYCE**

 **Redefine your easy network**

---

**Copyright ©2000-2024 Ruijie Networks Co., Ltd. All rights reserved.**

No part of this document may be reproduced or transmitted in any form or any means without prior written consent of Ruijie Networks Co., Ltd.

**Notice**

This content is applicable only to regions outside the China mainland. Ruijie Networks Co., Ltd. reserves the right to interpret this content.

The information contained herein is subject to change without notice. Nothing herein should be construed as constituting an additional warranty. Ruijie Networks Co., Ltd. shall not be liable for technical or editorial errors or omissions contained herein.



Ruijie Networks Co., Ltd.

**Official Website:** <https://www.ruijie.com>