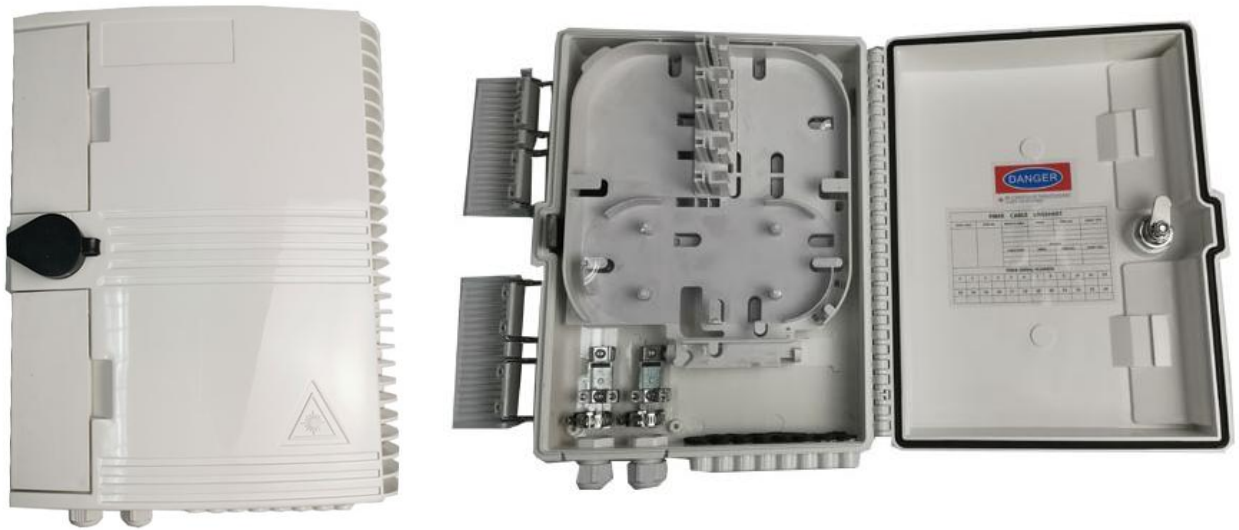




FIBER OPTIC DISTRIBUTION BOX SPECIFICATION

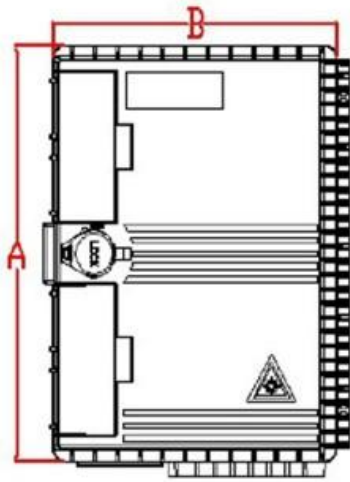
GFX-09A



SPECIFICATION

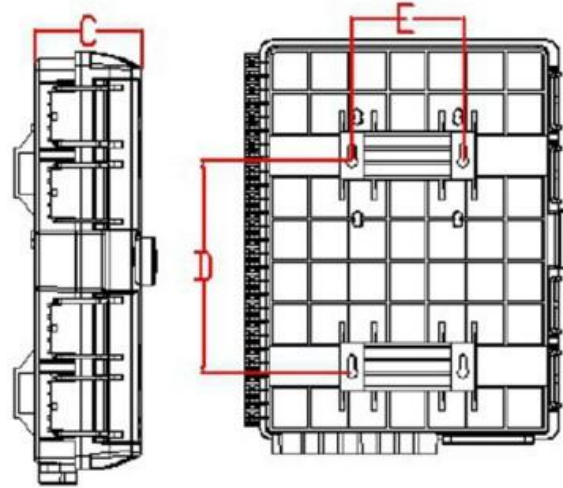
| MODEL | Dimension (L×W×H) | In/out port | Max. Capacity | Full Set N.W. (kgs) | Material |
|---------|----------------------|--|------------------|------------------------|----------|
| GFX-09A | 300*230*87mm | 2 Trunk Cable Ports 16 Drop Cable Ports | 16 FO | 1.36 KG | PC+ABS |

STRUCTURE

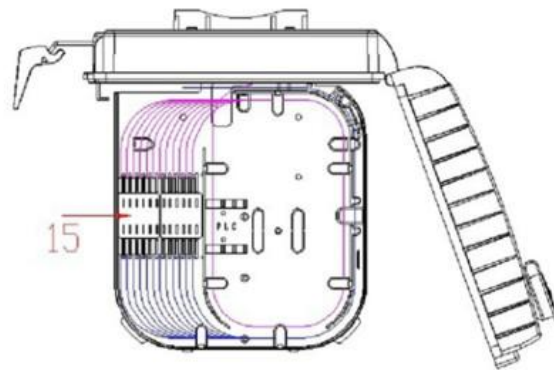
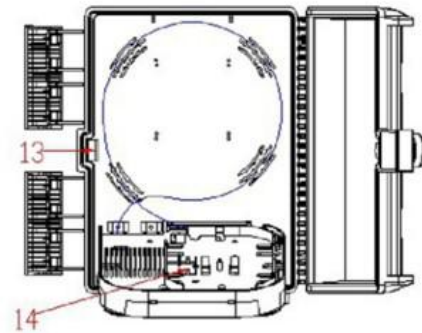
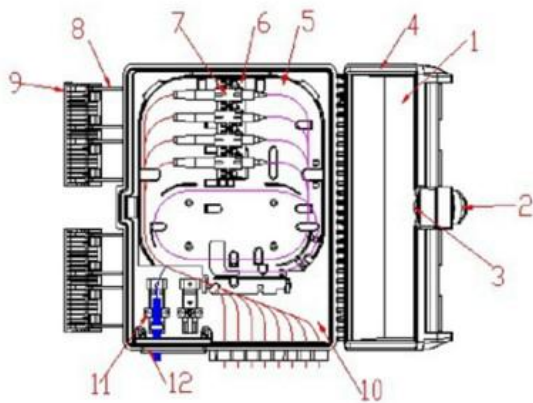


Pic-1-Box-Size

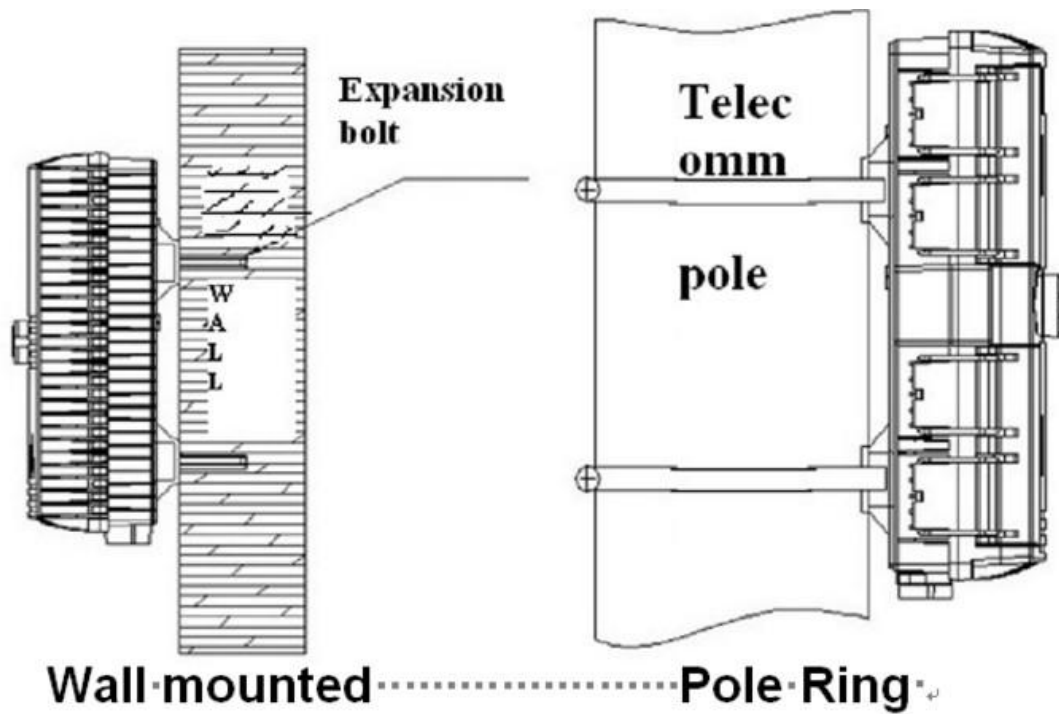
→



Pic-2-Installation-Size



INSTALLATION



ORDERING INFORMATION

- ① Empty Box without Pole Strap
- ② Empty Box with Pole Strap
- ③ Empty Box with 1*16 mini splitter+16 adapters or with 1*16 insert splitter
- ④ Empty Box with 1*8 mini splitter+8 adapters or with 1*8 insert splitter
- ⑤ Empty Box with 1*4 mini splitter+4 adapters or with 1*4 insert splitter
- ⑥ Empty Box with required splitter+adapters or required insert splitter

DESCRIPTION

The equipment is used as a termination point for the feeder cable to connect with drop cable in FTTx communication network system. The fiber splicing, splitting, distribution can be done in this box, and meanwhile it provides solid protection and management for the FTTx network building.

FEATURES

- 1) Clip-lock new design
- 2) Wet-proof water-proof dust-proof anti-aging, protection level up to IP65
- 3) Clamping for feeder cable and drop cable, fiber splitting, splicing, fixation, storage, distribution...etc all in one
- 4) Up to 16 FTTH flat cable
- 5) Wall and pole mountable

PACKAGE

- 1). Plastic Heat-Sealing



- 2). Carton Packing

