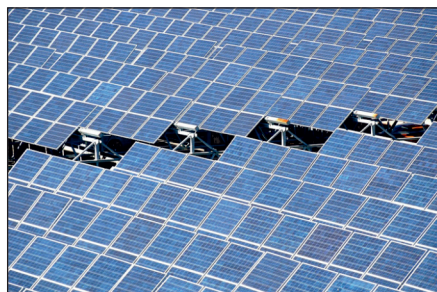


GEL - SEALED FREE MAINTENANCE BATTERY**XMB-G12-100 12V - 100AH (20h)****GEL**

La familia XMB-G está formada por baterías de excelente calidad, rendimiento destacado y larga vida útil. Pertenecen al grupo de baterías denominadas de GEL. Estas baterías son perfectas para aplicaciones de ciclos de descarga profunda con una larga vida útil, tanto en ciclos de descarga como en años de funcionamiento. Han sido diseñadas para cumplir con los más exigentes estándares mundiales de calidad, seguridad y rendimiento, usando tecnología punta. Son 100% libres de mantenimiento y selladas para una operación sin fugas. Su diseño incluye todas las ventajas provistas por los separadores AGM y el uso del electrolito en estado de GEL (gelificado mediante sílice nanométrico), lo cual le permite operar en temperaturas desde -20°C hasta +60°C y soportar hasta 2400 ciclos de carga/descarga (descargas 30% DOD a 20°C).

APLICACIONES PRINCIPALES**Telecom****Sistemas Solares****Sistemas Eólicos****Luminaria****UPS/SAI****Respaldo de Equipos Críticos****CARACTERÍSTICAS**

Tecnología híbrida GEL / AGM
GEL de sílice nanométrico ahumado
Separadores AGM y placas planas
Terminales superiores T11 (M8)
Caja de ABS de alto impacto
Recarga rápida
Auto descarga inferior al 2%/mes

VENTAJAS

Temperatura de operación: -20 to +60°C
Tiempo de vida: 12-14 años (@ 20°C)
Tiempo de vida en cantidad de Ciclos:
> 2400 ciclos a 30% DOD
> 1200 ciclos a 50% DOD
> 500 ciclos a 80% DOD
Alto rendimiento a bajas temperaturas

GEL - SEALED FREE MAINTENANCE BATTERY 12V - 100AH (20h)

Xmart
by **Integra**

TECHNICAL SPECIFICATIONS / Especificaciones Técnicas

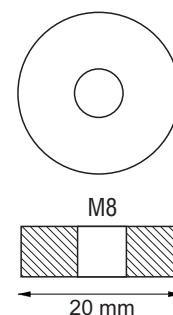
Nominal Voltage	12V	
Nominal Capacity (10hr)	100AH	
Dimension	Lenght	330 +/- 2mm
	Width	173 +/- 2mm
	Container Height	212 +/- 2mm
	Total Height (with terminals)	218 +/- 2mm
Approx Weight	Approx. 31 Kg (68 lbs)	
Terminal	T11 (M8 bolt)	
Container Material	ABS	
Rated Capacity	100.3 AH / 5.15A	(20hr, 1.80V/cell, 25°C/77°F)
	100.0 AH / 10.00A	(10hr, 1.80V/cell, 25°C/77°F)
	85.0 AH / 17.00A	(5hr, 1.75V/cell, 25°C/77°F)
	73.8 AH / 24.60A	(3hr, 1.75V/cell, 25°C/77°F)
	59.7 AH / 59.70A	(1hr, 1.60V/cell, 25°C/77°F)
Max. Discharge Current	1200A (5s)	
Internal Resistance	Approx. 5.0 mili Ohm	
Operating Temperature Range	Discharge:	-20°C to 60°C (-4 to 140°F)
	Charge:	0°C to 40°C (32 to 104°F)
	Storage:	-15°C to 40°C (5 to 104°F)
Normal Operating Temp. Range	25°C +/- 3°C (77°F +/- 5°F)	
Cycle Use	Initial Charging Current less than 30.0 A. Voltage 14.4V-15.0V at 25°C. Temp coefficient -30mV/°C	
Standby Use	No limit on initial charging current voltage 13.5V - 13.8V at 25°C (77°F) Temp. coefficient -20mV/°C	
Capacity affected by Temperature	40°C (104°F)	103%
	25°C (77°F)	100%
	0°C (32°F)	86%



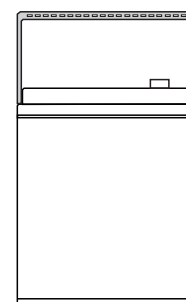
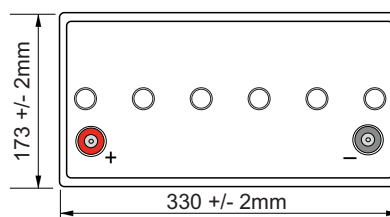
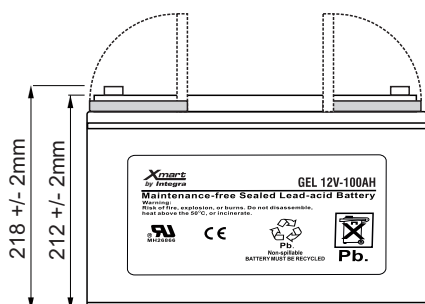
APPLICATIONS / Aplicaciones

Telecommunications
Solar Systems
Wind Power Systems
Engine Starting
Wellchairs
Floor cleaning machines
Gold trolley
Boats

TERMINAL T11 / Terminal T11



DIMENSIONS / Dimensiones



G12-100AH P2

GEL - SEALED FREE MAINTENANCE BATTERY

12V - 100AH (20h)



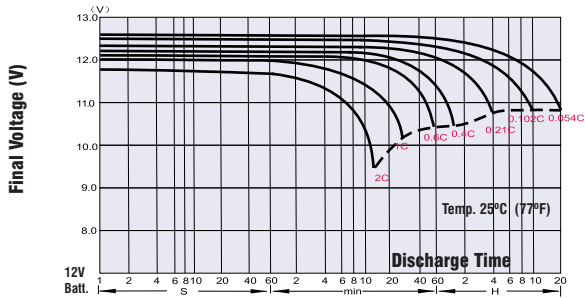
CONSTANT CURRENT DISCHARGE / Descarga Constante de Corriente (Amps at 25°C)

V / T	5min	10min	15min	20min	30min	45min	1h	2h	3h	4h	5h	6h	8h	10h	20h
1.85V/Cell	163.07	128.27	109.05	91.25	72.03	54.73	45.32	28.83	22.36	18.41	15.58	13.66	11.13	9.39	5.06
1.80V/Cell	215.77	161.45	129.79	106.22	82.95	62.11	50.38	31.26	24.08	19.63	16.79	14.57	11.84	10.12	5.21
1.75V/Cell	248.25	181.08	144.76	116.64	88.41	65.65	53.31	32.78	24.89	20.23	17.20	14.97	12.04	10.22	5.26
1.60V/Cell	276.57	199.69	156.29	124.02	93.27	68.99	55.64	34.39	25.80	20.84	17.70	15.38	12.14	10.32	5.36
1.65V/Cell	302.06	213.35	164.59	130.50	97.72	71.01	57.66	35.30	26.71	21.45	18.11	15.68	12.34	10.42	5.41
1.60V/Cell	335.85	233.58	177.54	140.11	103.79	75.16	60.39	36.62	27.62	21.95	18.41	15.98	12.54	10.52	5.46

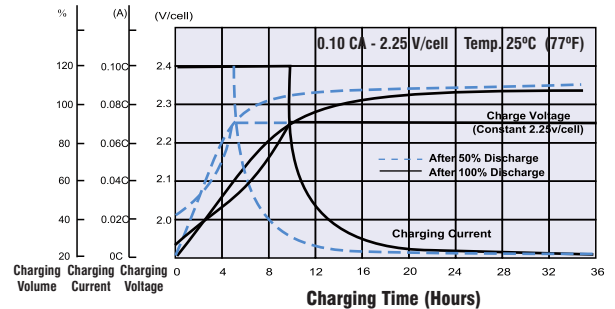
CONSTANT POWER DISCHARGE / Descarga Constante de Potencia (Watts at 25°C)

V / T	5min	10min	15min	20min	30min	45min	1h	2h	3h	4h	5h	6h	8h	10h	20h
1.85V/Cell	300.45	238.64	205.05	173.19	138.08	105.71	87.81	56.04	43.70	36.11	30.75	26.81	21.95	18.61	10.06
1.80V/Cell	393.51	297.21	241.06	198.98	157.00	119.07	97.11	60.59	46.74	38.24	32.88	28.73	23.37	20.03	10.32
1.75V/Cell	442.88	327.76	265.24	216.18	165.90	124.83	102.27	63.33	48.25	39.35	33.59	29.44	23.67	20.23	10.42
1.60V/Cell	478.99	352.64	282.03	227.81	173.79	130.40	106.22	66.26	49.77	40.46	34.39	29.94	23.97	20.33	10.62
1.65V/Cell	514.70	372.67	294.07	237.42	180.27	133.23	109.35	67.68	51.49	41.48	35.10	30.55	24.28	20.54	10.72
1.60V/Cell	559.01	398.67	311.88	252.19	189.98	139.90	114.01	69.80	53.01	42.28	35.61	31.16	24.58	20.84	10.82

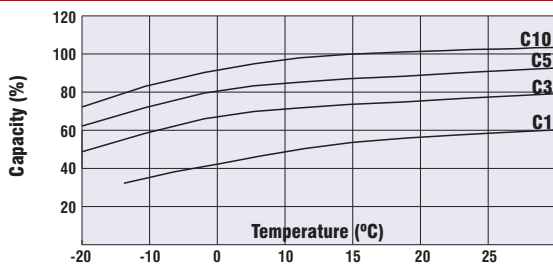
DISCHARGE CURVES / Curvas de Descarga



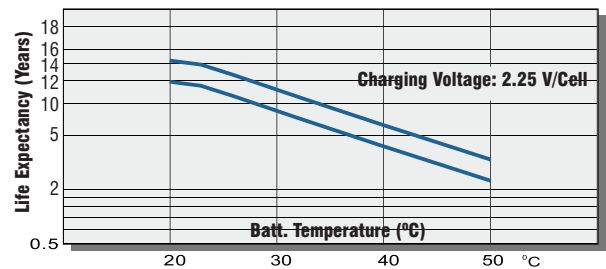
RECHARGING / Recarga



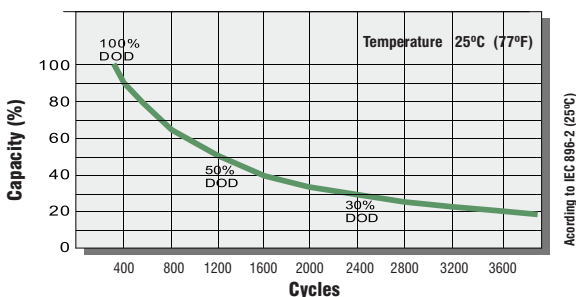
CAPACITY Vs. TEMP. / Capacidad Vs. Temp.



LIFE EXPECTANCY Vs. TEMP. / Vida Vs. Temp.



DISCHARGING CYCLES / Vida Vs. Descargas



STORAGE TIME / Tiempo de Almacenaje

