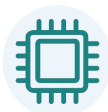




WIFI XPON ONU

1GE+1 FE+WIFI

FD512XW-X-R320



High Speed CPU



Low Power Consumption



Optional Shell Supply



Software Customization

Brief Views

FD512XW-X-R320 dual-mode ONU supports EPON and GPON two modes access. The ONU automatically switches into the corresponding PON mode by identifying the local OLT mode to complete GPON or EPON adaptive access.

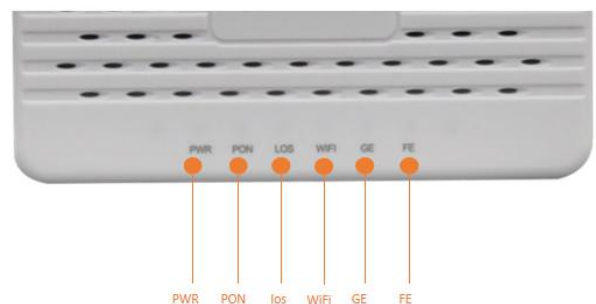
FD512XW-X-R320 have a high reliability and provide quality of service guarantee, easy management, flexible expansion and networking. It fully meets the ITU-T and IEEE technical standards and have good compatibility with third party OLT.

FD512XW-X-R320 integrates wireless function which meets 802.11 b/g/n technical standards. It has two external high gain omnidirectional antennas, the wireless transmission rate up to 300Mbps. It has the characteristics of strong penetrating power and wide coverage. It can provide users with more efficient data transmission security.

Functional Feature

- In compliant with ITU - T G. 984 and IEEE802.3ah Standard
- Support ONU auto-discovery/Link detection/remote upgrade of software
- Wi-Fi series meet 802.11 n/b/g technical standards
- Support VLAN transparent, tag configuration
- Support multicast function
- Support DHCP/Static/PPPOE internet mode
- Support port-binding
- Support OAM/OMCI+TR069 remote management
- Support data encryption and decryption function
- Support Dynamic Bandwidth Allocation (DBA)
- Support MAC filter and URL access control
- Support power-off alarm function ,easy for link problem detection
- Specialized design for system breakdown prevention to maintain stable system
- EMS network management based on SNMP , convenient for maintenance

Product Interface and LED



LED Definitions

Indiacator		Description
PWR	Power status	On: The ONT is power on; Off: The ONT is Power off;
PON	ONT Register	On: Success to register to OLT; Blinking: In process of registering to OLT; Off: In process of registering to OLT;
LOS	XPON optical signals	On: Optical power lower than receiver sensitivity; Off: Optical in normal;
WIFI	WIFI	Blinking: Data is being transmitted On: WIFI function Opens
GE	GE Port status	On: Ethernet connection is normal;Blinking: Data is being transmitted through the Ethernet port;Off: Ethernet connection is not set up;
FE	FE Port status	On: Ethernet connection is normal;Blinking: Data is being transmitted through the Ethernet port;Off: Ethernet connection is not set up;

Hardware

- **GPON/EPON Port**
 - SC/APC single mode single fiber
 - GPON: FSAN G.984.2 standard, Class B+
 - EPON: 1000BASE-PX20+ symmetric
 - GPON: 2.488Gbps/1.244Gbps downstream/upstream
 - EPON: 1.25Gbps downstream/upstream
 - Wavelength :
Transmit: 1310nm Receiver: 1490nm
 - Receiving sensitivity :
GPON: -28dBm EPON: -27dBm
 - Saturated power :
GPON: -8dBm EPON: -3dBm
 - Transmitting power :
GPON: 0.5 ~ 5dBm EPON:0 ~ 4dBm
- **User Port(LAN)**
 - RJ-45 connector
 - 1*10/100/1000M and 1*10/100M auto-negotiation
 - Full/half duplex mode
 - Auto MDI/MDI-X
 - 100m distance
- **User Port(WIFI)**
 - IEEE802.11b/g/n(2.4G)
 - Max rate: 300M(2.4G)
 - Max TX power: 2.4G: 17dBm

- **Indicators**

- PWR / PON / LOS / LAN1-2 / WIFI

- **Power**

- External 12VDC/1A power supply adapter
- Power consumption: <9.5W

- **Dimension and Weight**

- Item Dimension :
- 228mm(L) x 108mm(W) x 28mm (H)
- Item weight: 136g

- **Environmental Specifications**

- Operating temperature: 0 to 40°C
- Storage temperature: -40 to 85°C
- Operating humidity: 10% to 90%(Non-condensing)

Software

- **Management**

- OAM/OMCI / WEB / TR069 / Telnet

- **Register**

- Auto-discovery/Link detection/Remote upgrade software
- Auto/MAC/SN/LOID+Password authentication

- **L3**

- IPv4/IPv6 Dual Stack
- NAT
- DHCP client/server
- PPPOE client/ Passthrough
- Static and dynamic routing

- **Switch**

- MAC address learning
- MAC address learning account limit
- Port isolation
- Port flow control
- Broadcast storm suppression
- VLAN transparent/tag/translate/trunk

- **Wireless**

- SSID broadcast/ hide
- Choose channel automatically

- **Security**

- Firewall
- MAC address/URL filter
- Remote WEB/Telnet access control

Application

- Typical Solution: FTTH,
- Typical Business: Internet, Wi-Fi

