

DESCRIPTION

Fiber optic terminal box suitable for optical fiber splicing, distribution and protection. It is practical design for fiber arrangement, and for outdoor wall mounted and pole mounted application.

FEATURES

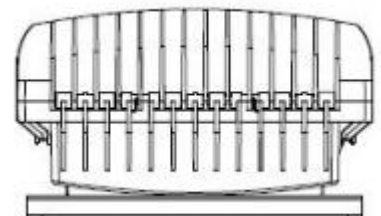
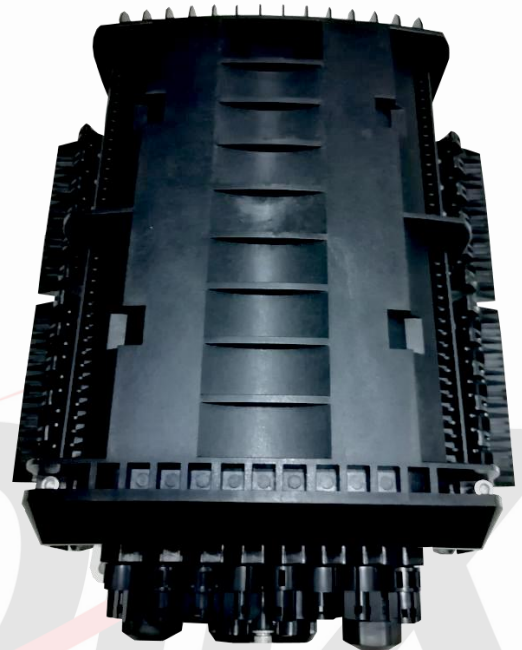
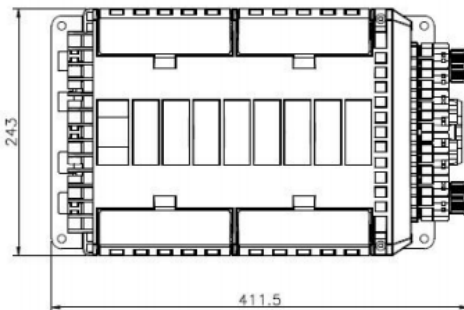
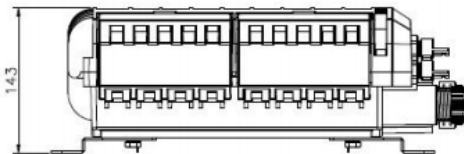
- Material: PP +GF
- 4 pcs fiber optic splice trays, each 12 fibers; 48 fibers.
- Can Load 16pcs SC simplex adapter
- Each splice tray can put 1pc 1:8 PLC steel tube type splitter.
- 4pcs Φ 18mm entry cable ports & 16pcs 3mm drop cable ports
- Wall mounting and pole mounting application
- Waterproof, outdoor using

APPLICATIONS

FTTH access network / Telecommunication Networks / CATV Networks / Data communications Networks / Local Area Networks

DIMENSION DRAWING

Dimension: (mm)



Dimension	Adapter port
411.5*243*143mm	Max. 16pcs SC simplex adapters