

OFP-7702AIW

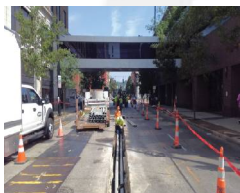
OPTICAL FACE PLATE ABS 02 PORTS

Description

Fiber optic faceplate (Fiber optic wall socket) is used for enduser indoor application. It's made of High quality ABS plastic. Max. allow 2pcs SC Simplex adapters. 2 fibers splice.



Application



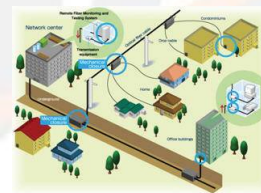
STREET



HOSPITAL



INDUSTRIES



FTTH

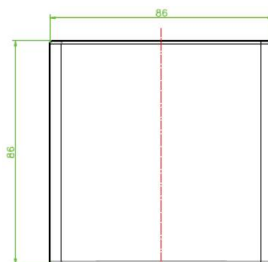
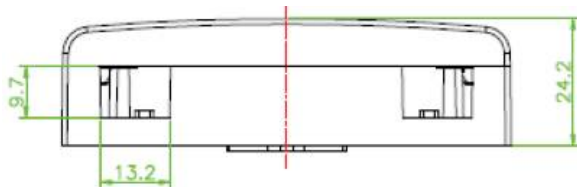


OTHERS

Specification

- Radian appearance makes it slinky
- Suitable for various modules and multimedia interfaces
- Support 2pcs SM SC simplex fiber connection

Measures:



Ordering details

OFP-7702AIW - Fiber Optic Faceplate ABS Plastic for 2 ports Simplex SC port or 02 Duplex LC port, ABS Plastic White color -Without Connectors