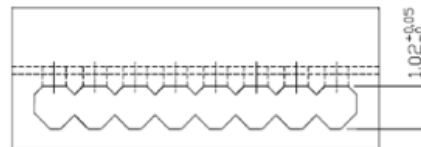
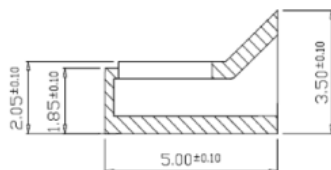
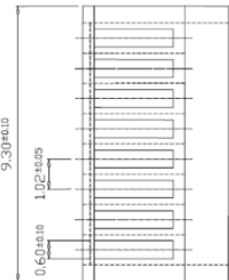
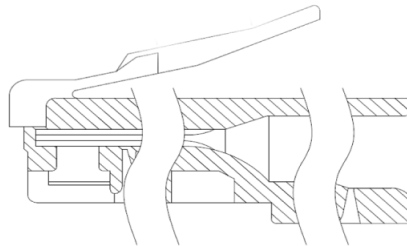
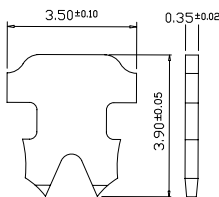
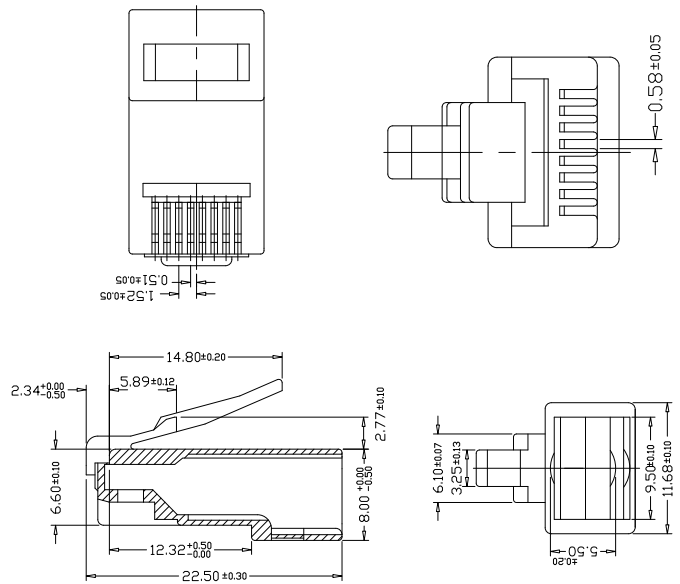




QP-RJ45C6

Cat. 6, conector RJ45



Especificaciones

Material:

1. Housing PC UL, 94V-2, Transparence Color.

2. **Contact Terminal:** Phosphor Bronze.

Finished: 6,15,30 - 50 micho-inch Gold Plating over 50 micho-inch Nickel Plated on contact area.

Rendimiento

a. **Operation Temperature:** -40°C to 80°C

b. **Cable to plug Tensile strenght:** 7.7 kgs

c. Use for 24-26 AWG stranded wires

Finished: 6,15,30 - 50 micho-inch